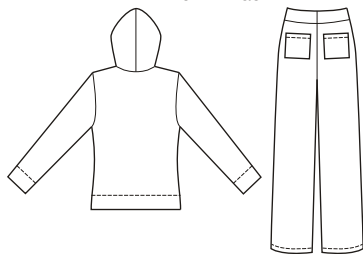
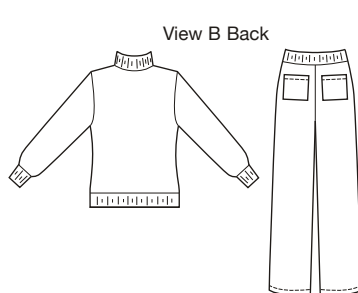




View A Back



View B Back



price



**3678**

**MISSES' JACKETS & PANTS**  
XS-S-M-L-XL

**Designed for stretch knits only.**

Suggested Fabrics: Sweatshirt fleece, velour, double knit, Polarfleece®, French terry.

Close fitting jackets have front zipper closure and kangaroo pockets. Close fitting pants have elastic at waist and drawstring, and patch pockets on back. View A jacket has hood and pants have self fabric waistband. View B jacket has stand-up collar, cuffs and bottom band made from ribbing, and pants have ribbing waistband.

Size	XS	S	M	L	XL	
<b>Finished Length of Jacket at Center Back</b>						
View A & B	23 (58)	23 1/4 (59)	23 1/2 (60)	25 1/2 (65)	25 1/2 (65)	" (cm)
<b>Finished Inside Leg Seam 30" (75 cm) — All Sizes</b>						
<b>Material Required:</b> Fabric requirement allows for nap, one-way design or shading. Extra fabric may be needed to match design or for shrinkage.						
<b>Fabric 60" (152 cm) Wide</b>						
View A	2 3/4 (2.55)	2 3/4 (2.55)	2 7/8 (2.65)	3 1/2 (3.20)	3 1/2 (3.20)	yd (m)
View B	2 3/8 (2.20)	2 1/2 (2.30)	2 1/2 (2.30)	3 1/4 (3.00)	3 1/4 (3.00)	yd (m)
<b>Ribbing 28" (70 cm) Wide</b>						
View B	7/8 (0.80)	7/8 (0.80)	7/8 (0.80)	7/8 (0.80)	7/8 (0.80)	yd (m)
<b>Notions:</b> Thread, 1 yd (0.95 m) of 1 1/2" (4 cm) wide elastic, one drawstring for waist. <b>View A:</b> one separating zipper—20" (50 cm) for sizes XS, S, & M; 22" (55 cm) for sizes L & XL. <b>View B:</b> one separating zipper—22" (55 cm) for sizes XS, S, & M; 24" (60 cm) for sizes L & XL.						