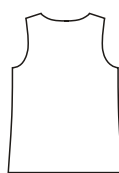




View A Back



View B Back



price **3691**

MISSES' TUNIC & TOP
XS-S-M-L-XL

Designed for lightweight woven fabrics.

Suggested Fabrics: Challis, silk-like fabrics, georgette, rayon and blends, cotton, cotton types.

Pullover tunic and top have round neckline with tucks on front. Neckline and armholes are finished with facings. View A has bias cut cowl collar.

Size	XS	S	M	L	XL	
Finished Length from Natural Waist						
View A	27 1/2 (69)	28 3/4 (73)	30 (76)	31 (79)	32 1/2 (82)	" (cm)
View B	21 1/2 (55)	22 1/2 (57)	23 1/2 (60)	24 1/2 (62)	25 1/2 (65)	" (cm)
Material Required: Fabric requirement allows for nap, one-way design or shading. Extra fabric may be needed to match design or for shrinkage.						
Fabric 60" (152 cm) Wide						
View A	1 5/8 (1.50)	1 5/8 (1.50)	1 3/4 (1.60)	1 7/8 (1.75)	1 7/8 (1.75)	yd (m)
View B	7/8 (0.80)	1 (0.95)	1 (0.95)	1 (0.95)	1 (0.95)	yd (m)
Fabric 45" (115 cm) Wide						
View A	1 5/8 (1.50)	2 (1.85)	2 1/4 (2.10)	2 3/8 (2.20)	2 1/2 (2.30)	yd (m)
View B	1 (0.95)	1 1/2 (1.40)	1 5/8 (1.50)	1 5/8 (1.50)	1 3/4 (1.60)	yd (m)
Fusible Interfacing 24" (60 cm) Wide						
View A & B	3/8 (0.35)	3/8 (0.35)	3/8 (0.35)	3/8 (0.35)	3/8 (0.35)	yd (m)
Notions: Thread.						