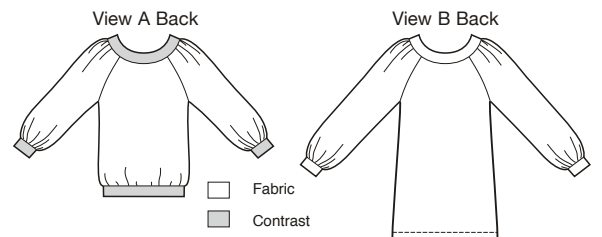




price **3742** **MISSES' TOP & TUNIC**  
XS-S-M-L-XL

**Designed for soft lightweight woven fabrics.**  
Suggested Fabrics: Cotton, cotton types, challis, handkerchief linen, crepe, georgette, charmeuse.

Pull-over tops have round neckline with neckband, raglan sleeves gathered to cuffs, and front and sleeves are gathered to neckband. View A has front tab with button closure, three-quarter length sleeves, and bottom edge is gathered to waistband. Tabs, neckband, and waistband are from contrast fabric. View B has full length sleeves.



**Finished Length at Center Back**

View A (measurement does not allow for blousing)	24 1/2 (62)	25 1/2 (64)	26 1/2 (67)	27 1/2 (69)	28 (71)	" (cm)
View B	27 (68)	28 (71)	29 1/2 (75)	31 (78)	32 (81)	" (cm)

**Material Required:** Fabric requirement allows for nap, one-way design or shading. Extra fabric may be needed to match design or for shrinkage.

**Fabric 60" (152 cm) Wide**

View A Fabric	1 3/8 (1.30)	1 3/8 (1.30)	1 1/2 (1.40)	1 1/2 (1.40)	1 5/8 (1.50)	yd (m)
View A Contrast	5/8 (0.60)	5/8 (0.60)	5/8 (0.60)	5/8 (0.60)	5/8 (0.60)	yd (m)
View B	1 5/8 (1.50)	1 3/4 (1.60)	1 7/8 (1.75)	1 7/8 (1.75)	2 (1.85)	yd (m)

**Fabric 45" (115 cm) Wide**

View A Fabric	1 3/8 (1.30)	2 (1.85)	2 1/8 (1.95)	2 1/8 (1.95)	2 1/4 (2.10)	yd (m)
View A Contrast	3/4 (0.70)	3/4 (0.70)	3/4 (0.70)	3/4 (0.70)	3/4 (0.70)	yd (m)
View B	2 3/8 (2.20)	2 1/2 (2.30)	2 5/8 (2.40)	2 3/4 (2.55)	2 7/8 (2.65)	yd (m)

**Fusible Interfacing 24" (60 cm) Wide**

View A	1/2 (0.50)	1/2 (0.50)	1/2 (0.50)	1/2 (0.50)	1/2 (0.50)	yd (m)
View B	3/8 (0.35)	3/8 (0.35)	3/8 (0.35)	3/8 (0.35)	3/8 (0.35)	yd (m)

**Notions:** Thread. **View A:** Four 5/8" (15 mm) buttons.