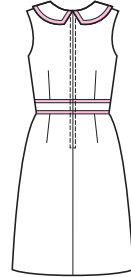


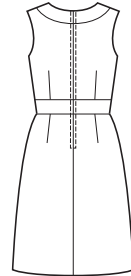


View A Back



□ Fabric
 ■ Trim

View B Back



price **3760**

MISSES' DRESSES
 XS-S-M-L-XL



Designed for medium weight woven fabrics.

Suggested Fabrics: Cotton, cotton types, linen, rayon, satin, jacquard, dupioni, silk types, wool.

Sleeveless dresses have fitted bodice with princess seams, waist inset, center back zipper, armholes finished with facings, and slightly A lined skirt. View A has collar, decorative trim on collar, front bodice and waist inset, and decorative buttons. View B has boat neckline with inset. Pattern includes 5/8" (1.5 cm) seam allowances.

Finished Length from Waist View A & B 22" (56 cm) — All Sizes

Size	XS	S	M	L	XL	
Material Required: Fabric requirement allows for nap, one-way design or shading. Extra fabric may be needed to match design or for shrinkage.						
Fabric 60" (152 cm) Wide						
View A	1 1/2 (1.40)	1 1/2 (1.40)	1 7/8 (1.75)	1 7/8 (1.75)	1 7/8 (1.75)	yd (m)
View B	1 5/8 (1.50)	1 5/8 (1.50)	1 3/4 (1.60)	1 3/4 (1.60)	1 3/4 (1.60)	yd (m)
Fabric 45" (115 cm) Wide						
View A	2 1/4 (2.10)	2 1/4 (2.10)	2 3/8 (2.20)	2 3/8 (2.20)	2 1/2 (2.30)	yd (m)
View B	2 1/8 (1.95)	2 1/8 (1.95)	2 1/4 (2.10)	2 1/4 (2.10)	2 1/4 (2.10)	yd (m)
Fusible Interfacing 24" (60 cm) Wide						
View A	3/4 (0.70)	3/4 (0.70)	7/8 (0.80)	7/8 (0.80)	7/8 (0.80)	yd (m)
View B	1/2 (0.50)	1/2 (0.50)	5/8 (0.60)	5/8 (0.60)	5/8 (0.60)	yd (m)
Notions: Thread, one 22" (55 cm) zipper. View A: Three 7/8" (22 mm) buttons; 3/8" (1 cm) wide ribbon or decorative trim: 4 yd (3.70 m) for sizes XS-S; 4 7/8 yd (4.50 m) for sizes M-L-XL.						