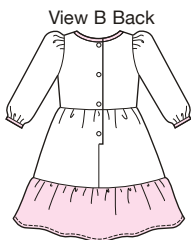
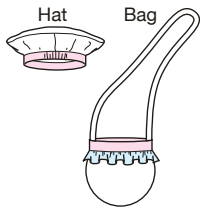


- Fabric
- Contrast I
- Contrast II



price **3767**

GIRLS' DRESSES, HAT & BAG

Dresses Sizes: 4-5-6-7-8
Hat Sizes: S-M-L

Designed for lightweight woven fabrics.

Suggested Fabrics: Cotton, cotton types, calico, linen, seersucker, chambray.

View A dress, hat and bag are made from three different fabrics. Dress has round neckline, back button closure, three gathered tiers, and neckline and armholes are finished with bindings. Beret style hat has band from contrast fabric. Bag has band, ruffle and ribbon strap. View B dress has round neckline, full length gathered sleeves, wide ruffle at bottom edge, and optional ribbon for belt. Ruffle and bindings are from contrast fabric. Pattern includes 5/8" (1.5 cm) seam allowances.



Size	4	5	6	7	8	
Finished Length at Center Back						
View A & B	20 (51)	21 1/2 (55)	23 (59)	24 1/2 (62)	26 (66)	" (cm)
Material Required: Fabric requirement allows for nap, one-way design or shading. Extra fabric may be needed to match design or for shrinkage.						
Fabric 60" (152 cm) Wide						
View A Dress, Hat & Bag	1 1/4 (1.15)	1 1/4 (1.15)	1 1/2 (1.40)	1 5/8 (1.50)	1 5/8 (1.50)	yd (m)
Contrast I & II, Each	1/2 (0.50)	1/2 (0.50)	1/2 (0.50)	1/2 (0.50)	1/2 (0.50)	yd (m)
View B Dress	7/8 (0.80)	1 (0.95)	1 (0.95)	1 1/8 (1.05)	1 1/8 (1.05)	yd (m)
Contrast I	1/2 (0.50)	1/2 (0.50)	1/2 (0.50)	1/2 (0.50)	1/2 (0.50)	yd (m)
Fabric 45" (115 cm) Wide						
View A Dress, Hat & Bag	1 7/8 (1.75)	1 7/8 (1.75)	2 (1.85)	2 (1.85)	2 (1.85)	yd (m)
Contrast I	1/2 (0.50)	1/2 (0.50)	1/2 (0.50)	5/8 (0.60)	5/8 (0.60)	yd (m)
Contrast II	1/2 (0.50)	1/2 (0.50)	1/2 (0.50)	1/2 (0.50)	1/2 (0.50)	yd (m)
View B Dress	1 1/8 (1.05)	1 1/4 (1.15)	1 1/4 (1.15)	1 3/8 (1.30)	1 3/8 (1.30)	yd (m)
Contrast I	3/4 (0.70)	3/4 (0.70)	7/8 (0.80)	7/8 (0.80)	7/8 (0.80)	yd (m)
Fusible Interfacing 24" (60 cm) Wide						
View A & B	1/8 (0.15)	1/8 (0.15)	1/8 (0.15)	1/8 (0.15)	1/8 (0.15)	yd (m)
Notions: Thread, four 5/8" (15 mm) buttons. Bag: 1 yd (0.95 m) ribbon for strap. Hat: 5" (12 cm) of 1" (2.5 cm) wide elastic. View B: Optional—1 1/2 yd (1.40 m) of ribbon for belt.						