



price **3799**

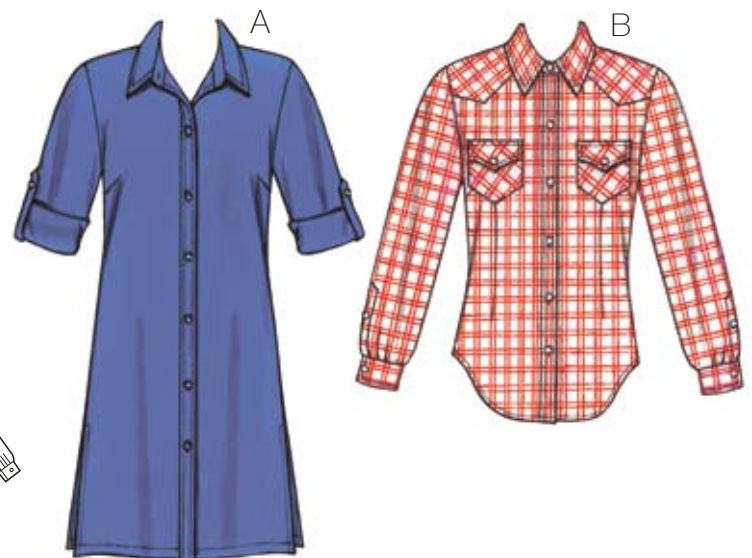
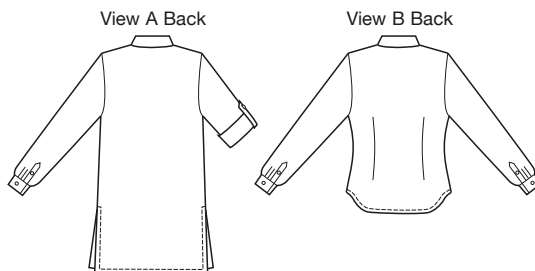
**MISSES' SHIRTS**  
XS-S-M-L-XL

**Designed for woven fabrics.**

Suggested Fabrics: Cotton, cotton types, linen, shirtings, rayon & blends, chambray, broadcloth.

Semi-fitted shirts have bust darts, collar with collar stand, and full length sleeves with cuffs. View A is tunic length, has side hemline slits, front button closure, and sleeves can be folded and held in place with buttoned tabs. View B western style shirt has waist darts, front and back yoke, breast pockets with flaps, shirt-tail hemline, and front button or snap closure.

Pattern includes 1/4" (6 mm) seam allowances.



| Size  | XS           | S            | M            | L            | XL           |        |
|---|--------------|--------------|--------------|--------------|--------------|--------|
| <b>Finished Length at Center Back</b>   |              |              |              |              |              |        |
| View A  | 32 3/4 (83)  | 33 3/4 (86)  | 34 3/4 (88)  | 35 3/4 (91)  | 36 3/4 (93)  | " (cm) |
| View B  | 24 (61)      | 24 3/4 (63)  | 25 1/2 (65)  | 26 1/4 (67)  | 27 (69)      | " (cm) |
| <b>Material Required:</b> Fabric requirement allows for nap, one-way design or shading. Extra fabric may be needed to match design or for shrinkage.              |              |              |              |              |              |        |
| <b>Fabric 60" (152 cm) Wide</b>   |              |              |              |              |              |        |
| View A  | 1 3/4 (1.60) | 1 3/4 (1.60) | 2 1/8 (1.95) | 2 1/8 (1.95) | 2 1/4 (2.10) | yd (m) |
| View B  | 1 5/8 (1.50) | 1 3/4 (1.60) | 1 7/8 (1.75) | 1 7/8 (1.75) | 2 (1.85)     | yd (m) |
| <b>Fabric 45" (115 cm) Wide</b>   |              |              |              |              |              |        |
| View A  | 2 5/8 (2.40) | 2 3/4 (2.55) | 2 7/8 (2.65) | 2 7/8 (2.65) | 3 (2.75)     | yd (m) |
| View B  | 2 3/8 (2.20) | 2 3/8 (2.20) | 2 1/2 (2.30) | 2 5/8 (2.40) | 2 5/8 (2.40) | yd (m) |
| <b>Fusible Interfacing 22" (56 cm) Wide</b>   |              |              |              |              |              |        |
| View A  | 1 (0.95)     | 1 (0.95)     | 1 (0.95)     | 1 (0.95)     | 1 1/8 (1.05) | yd (m) |
| View B  | 3/4 (0.70)   | 3/4 (0.70)   | 3/4 (0.70)   | 3/4 (0.70)   | 3/4 (0.70)   | yd (m) |
| <b>Notions:</b> Thread. <b>View A:</b> Thirteen 5/8" (15 mm) buttons. <b>View B:</b> Twelve 5/8" (15 mm) buttons or one 5/8" (15 mm) button and eleven snap sets. |              |              |              |              |              |        |