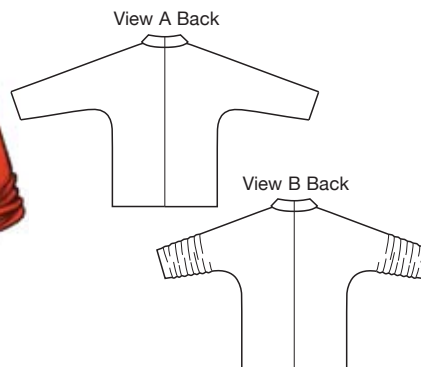




price **3814** MISSES' JACKETS  
XS-S-M-L-XL

**Designed for medium weight woven fabrics.**  
Suggested Fabrics: Linen, cotton types, twill, crepe, denim, suitings, gabardine, jacquard.

Loose fitting dolman sleeve jackets have shawl collar with notch, patch pockets, and one button closure. View B has stitched elastic on sleeve seams gathering sleeves to three-quarter length. Jacket shown with purchased belt. Pattern includes 5/8" (1.5 cm) seam allowances.



Size	XS	S	M	L	XL	
<b>Finished Length at Center Back</b>						
View A & B	27 1/2 (70)	28 1/2 (72)	29 1/2 (75)	30 1/2 (77)	31 1/2 (80)	" (cm)
<b>Material Required:</b> Fabric requirement allows for nap, one-way design or shading. Extra fabric may be needed to match design or for shrinkage.						
<b>Fabric 60" (152 cm) Wide</b>						
View A & B	2 1/2 (2.30)	2 5/8 (2.40)	2 3/4 (2.55)	2 3/4 (2.55)	3 3/4 (3.45)	yd (m)
<b>Fabric 45" (115 cm) Wide</b>						
View A & B	3 3/8 (3.10)	3 1/2 (3.20)	3 5/8 (3.35)	3 3/4 (3.45)	4 (3.70)	yd (m)
<b>Fusible Interfacing 22" (56 cm) Wide</b>						
View A & B	1 1/4 (1.15)	1 1/4 (1.15)	1 1/4 (1.15)	1 1/4 (1.15)	1 3/8 (1.30)	yd (m)
<b>Notions:</b> Thread, one 1" (25 mm) button. <b>View B:</b> 1 yd (0.95 m) of clear elastic.						