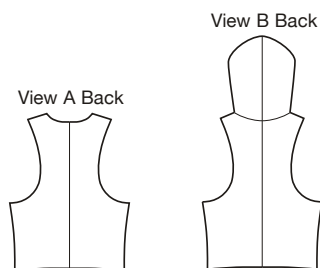




Designed for soft knit and woven fabrics.
 Suggested Fabrics: Suede cloth, sweatshirt fleece, Polarfleece®.
NOTE: Wrong side of fabric will show.

price **3838** **MISSES' VESTS**
 XS-S-M-L-XL

Single layer vests have shaped bottom edge and all outer edges are left unfinished or can be finished with machine stitches. View A front edges extend and drape. View B has hood. Vests are easy to make and have special easy to follow instructions.
 Pattern includes 5/8" (1.5 cm) seam allowances.



| Size | XS | S | M | L | XL | |
|--|--------------|--------------|--------------|--------------|--------------|--------|
| Finished Length at Center Back | 19 (48) | 19 1/2 (49) | 20 (50) | 20 1/2 (52) | 21 (53) | " (cm) |
| Material Required: Fabric requirement allows for nap, one-way design or shading. Extra fabric may be needed to match design or for shrinkage. | | | | | | |
| Fabric 60" (152 cm) Wide | | | | | | |
| View A | 7/8 (0.80) | 7/8 (0.80) | 1 1/8 (1.05) | 1 1/4 (1.15) | 1 1/4 (1.15) | yd (m) |
| View B | 1 1/8 (1.05) | 1 1/4 (1.15) | 1 1/4 (1.15) | 1 5/8 (1.50) | 1 3/4 (1.60) | yd (m) |
| Notions: Thread. | | | | | | |