



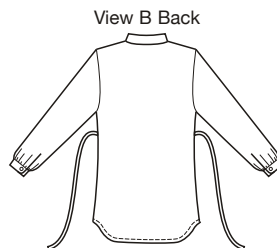
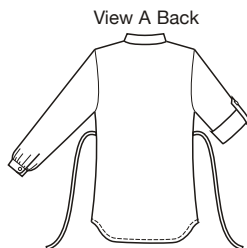
Designed for lightweight woven fabrics.

Suggested Fabrics: Cotton, cotton types, lawn, batiste, chambray, calico.
View B optional overlay: Lace, chiffon, netting, sheer fabrics.

price **3849**

MISSSES' TOPS
XS-S-M-L-XL

Tops have Mandarin collar, princess seams, empire waist on front, and lower front is gathered to upper front, full length sleeves gathered to cuffs, front tabs with button closure, ties, and shirt-tail hemline. View A has pin-tucks on upper front, and sleeves can be folded and held in place with buttoned tabs. View B has optional lace overlay on front. Pattern includes 1/4" (6 mm) seam allowances.



| Size | XS | S | M | L | XL | |
|--|---|--------------|--------------|--------------|--------------|--------|
| Finished Length at Center Back | | | | | | |
| View A & B | 26 1/2 (67) | 27 1/2 (70) | 28 1/2 (72) | 29 1/2 (75) | 30 1/2 (77) | " (cm) |
| Material Required: Fabric requirement allows for nap, one-way design or shading. Extra fabric may be needed to match design or for shrinkage. | | | | | | |
| Fabric 60" (152 cm) Wide | | | | | | |
| View A | 1 7/8 (1.75) | 1 7/8 (1.75) | 2 (1.85) | 2 1/8 (1.95) | 2 1/8 (1.95) | yd (m) |
| View B | 1 5/8 (1.50) | 1 5/8 (1.50) | 1 3/4 (1.60) | 1 3/4 (1.60) | 1 3/4 (1.60) | yd (m) |
| Fabric 45" (115 cm) Wide | | | | | | |
| View A | 2 1/2 (2.30) | 2 1/2 (2.30) | 2 5/8 (2.40) | 2 3/4 (2.55) | 2 3/4 (2.55) | yd (m) |
| View B | 2 (1.85) | 2 1/8 (1.95) | 2 1/8 (1.95) | 2 1/8 (1.95) | 2 1/4 (2.10) | yd (m) |
| View B Optional Overlay | 14" x 19" (36 cm x 48 cm) Piece—All Sizes | | | | | |
| Fusible Interfacing 22" (56 cm) Wide | | | | | | |
| View A | 3/4 (0.70) | 3/4 (0.70) | 7/8 (0.80) | 7/8 (0.80) | 7/8 (0.80) | yd (m) |
| View B | 5/8 (0.60) | 5/8 (0.60) | 5/8 (0.60) | 5/8 (0.60) | 5/8 (0.60) | yd (m) |
| Notions: Thread. View A: Ten 1/2" (12 mm) buttons. View B: Six 1/2" (12 mm) buttons. | | | | | | |