



**Designed for lightweight woven fabrics.**  
Suggested Fabrics: Cotton, cotton types, calicos, chambray, linen.

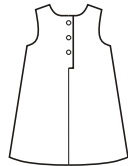


**3864**

**TODDLERS' A-LINE DRESSES**  
T1-T2-T3-T4

Pull-over A-line dresses have back button closure, and armholes and neckline are finished with facings. View B has two contrast ruffles at bottom edge. Pattern includes 5/8" (1.5 cm) seam allowances.

View A Back



View B Back



- Fabric
- Contrast I
- Contrast II



Size	T1	T2	T3	T4	
<b>Finished Length at Center Back</b>					
View A & B	15 1/2 (39)	17 (43)	18 1/4 (46)	19 3/4 (50)	" (cm)
<b>Material Required:</b> Fabric requirement allows for nap, one-way design or shading. Extra fabric may be needed to match design or for shrinkage.					
<b>Fabric 60" (152 cm) Wide</b>					
View A	5/8 (0.60)	3/4 (0.70)	3/4 (0.70)	7/8 (0.80)	yd (m)
View B	5/8 (0.60)	5/8 (0.60)	5/8 (0.60)	3/4 (0.70)	yd (m)
Contrast I	1/4 (0.25)	1/4 (0.25)	1/4 (0.25)	1/4 (0.25)	yd (m)
Contrast II	1/4 (0.25)	1/4 (0.25)	1/4 (0.25)	1/4 (0.25)	yd (m)
<b>Fabric 45" (115 cm) Wide</b>					
View A	7/8 (0.80)	7/8 (0.80)	1 (0.95)	1 (0.95)	yd (m)
View B	3/4 (0.70)	7/8 (0.80)	7/8 (0.80)	7/8 (0.80)	yd (m)
Contrast I	3/8 (0.35)	3/8 (0.35)	3/8 (0.35)	3/8 (0.35)	yd (m)
Contrast II	3/8 (0.35)	3/8 (0.35)	3/8 (0.35)	3/8 (0.35)	yd (m)
<b>Fusible Interfacing 22" (56 cm) Wide</b>					
View A or B	3/8 (0.35)	3/8 (0.35)	3/8 (0.35)	3/8 (0.35)	yd (m)
<b>Notions:</b> Thread, three 5/8" (15 mm) buttons.					