

Made to Match
Doll's pattern K3965

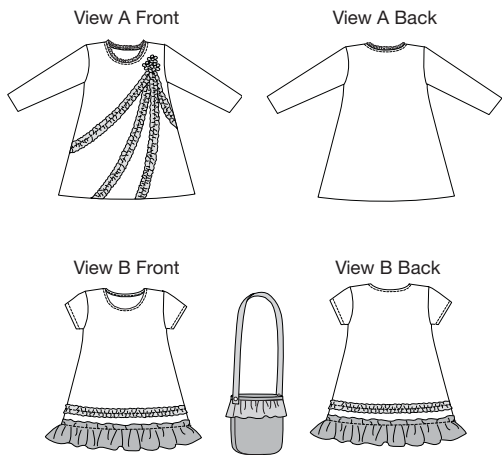
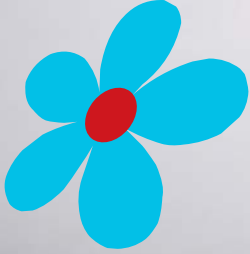
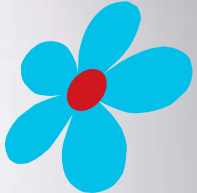
CHILDREN & TEEN



A



B



K3959 GIRL'S DRESSES AND PURSE						
XXS-XS-S-M-L						
DESIGNED FOR STRETCH KNITS ONLY WITH 35% STRETCH ACROSS THE GRAIN. RUFFLES AND PURSE DESIGNED FOR WOVEN FABRICS.						
Suggested Fabrics: Knits: Interlock Jersey, Stretch Velvet. Wovens: Cotton, Organza, Silk.						
SIZE	XXS(3)	XS(4-5)	S(6)	M(7-8)	L(10)	
FABRIC 58" (148 cm) WIDE						
View A	¾ 0.70	¾ 0.70	¾ 0.80	¾ 0.80	1 1.00	yd m
View B	¾ 0.60	¾ 0.60	¾ 0.70	¾ 0.70	¾ 0.80	yd m
FABRIC 42" (106 cm) WIDE, 58" (148 cm) WIDE						
Contrast A	¾ 0.80	¾ 0.80	¾ 0.80	¾ 0.80	1 1.00	yd m
Contrast 1 B	¾ 0.40	¾ 0.40	¾ 0.40	¾ 0.40	¾ 0.40	yd m
Contrast 2 B	¼ 0.20	¼ 0.20	¼ 0.20	¼ 0.20	¼ 0.20	yd m
FLEECE 42" (106 cm) WIDE						
Purse B	¼ 0.20	¼ 0.20	¼ 0.20	¼ 0.20	¼ 0.20	yd m
NOTIONS: Thread. View A: Purchased flowers. Purse B: Two ½" (1.3 cm) buttons.						